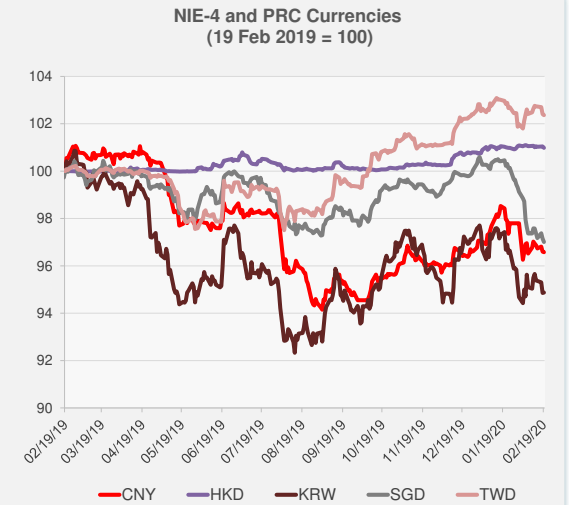
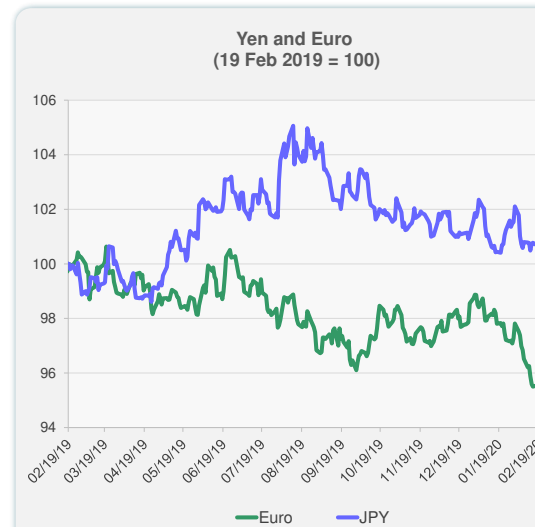
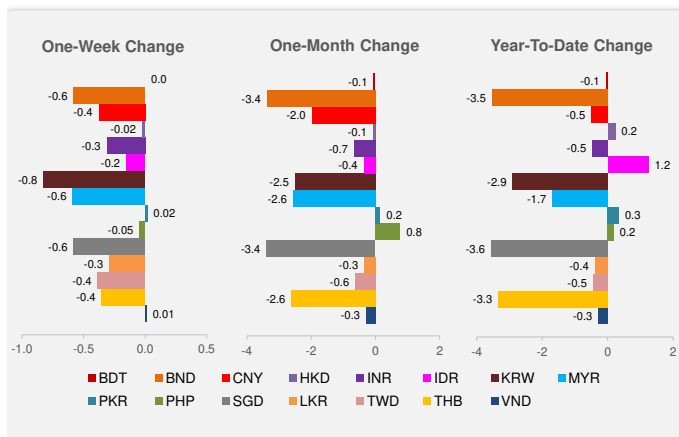
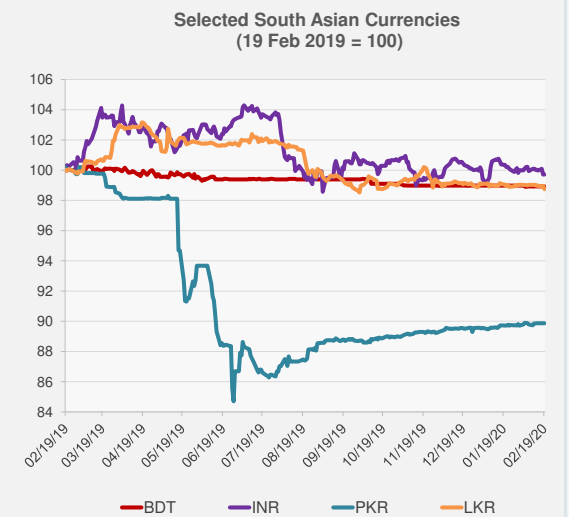
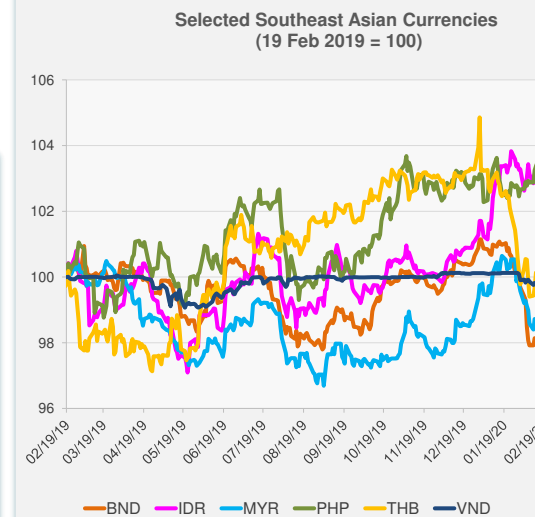


	Latest Closing	% change from Previous Day	% change from 01-Jan-20
Euro	0.93	0.12	-3.63
Japanese yen (JPY)	111.37	-1.35	-2.34
Bangladeshi taka (BDT)	84.93	0.00	-0.06
Brunei dollar (BND)	1.39	-0.13	-3.54
Chinese yuan (CNY)	7.00	-0.03	-0.50
Hong Kong dollar (HKD)	7.77	-0.06	0.24
Indian rupee (INR)	71.56	0.00	-0.47
Indonesian rupiah (IDR)	13,695.00	-0.01	1.25
Korean won (KRW)	1,189.30	0.02	-2.91
Malaysian ringgit (MYR)	4.16	-0.19	-1.69
Pakistan rupee (PKR)	154.37	0.00	0.34
Philippine peso (PHP)	50.56	0.20	0.19
Singapore dollar (SGD)	1.39	-0.14	-3.56
Sri Lanka rupee (LKR)	181.88	-0.21	-0.39
Taipei,China NT dollar (TWD)	30.13	-0.04	-0.45
Thai baht (THB)	31.22	0.01	-3.34
Vietnamese dong (VND)	23,239.00	-0.03	-0.28



NIE = Newly Industrialized Economies

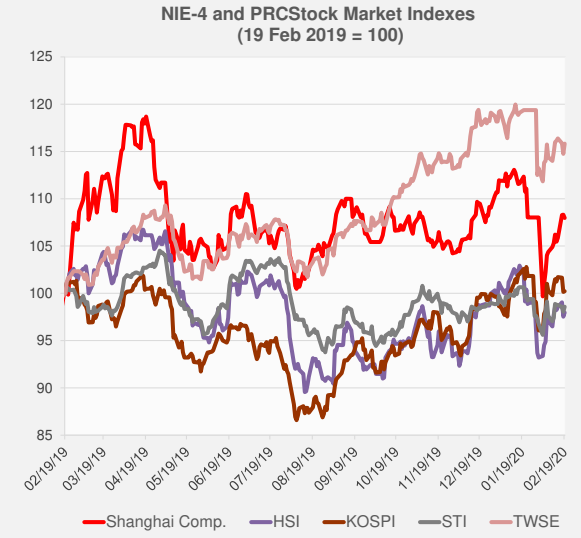
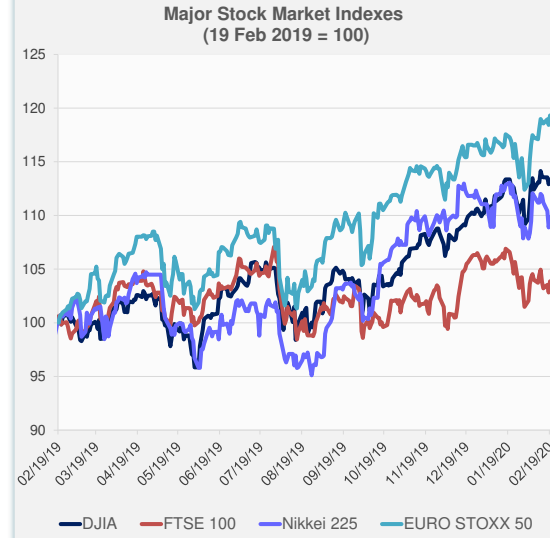


Note: Negative/Decreasing values indicate depreciation of local currency, and positive/increasing values indicate appreciation.
Source: Bloomberg.

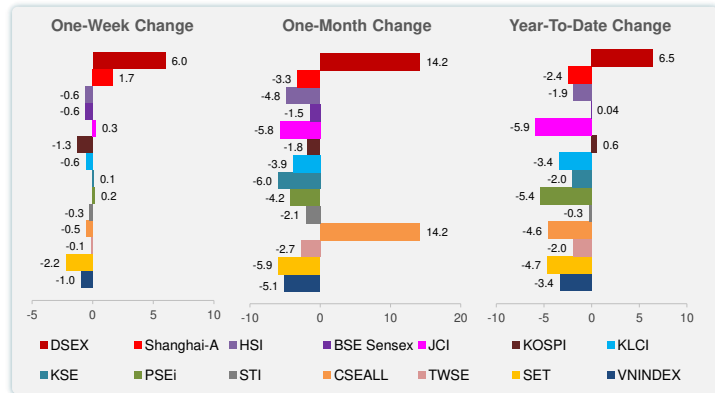
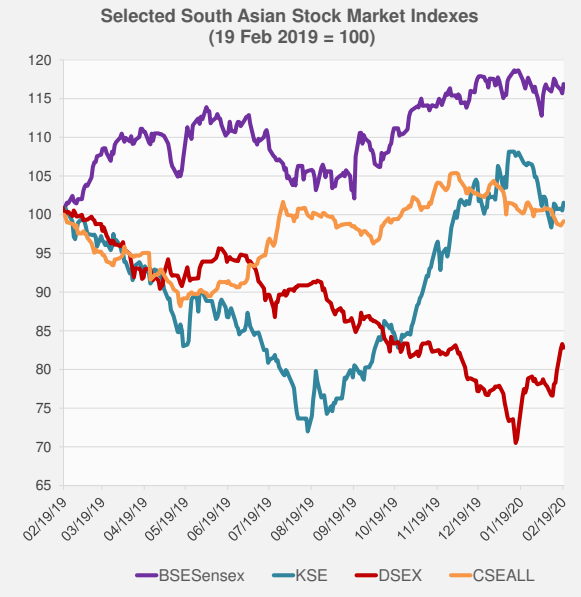
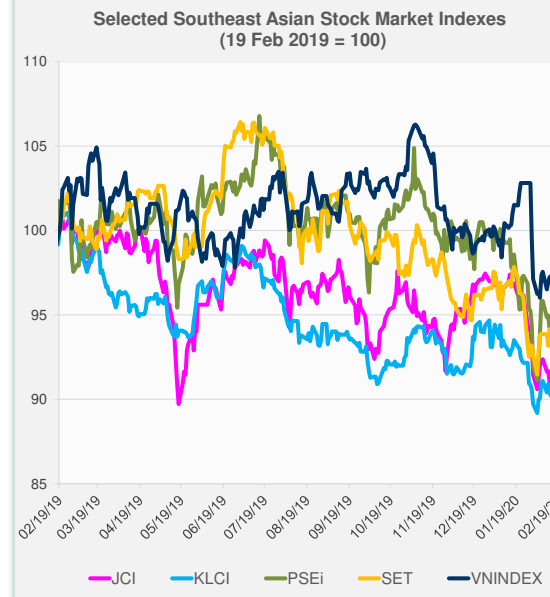


Source: Bloomberg.

	Latest Closing	% change from Previous Day	% change from 01-Jan-20
US Dow Jones Ind Avg	29,348.03	0.40	2.84
US NASDAQ	9,817.18	0.87	9.41
US S&P 500	3,386.15	0.47	4.81
UK FTSE 100	7,457.02	1.02	-1.13
EURO STOXX 50	3,865.18	0.75	3.20
Japan NIKKEI 225	23,400.70	0.89	-1.08
Bangladesh DSEX	4,740.40	-0.58	6.46
PRC Shanghai Comp.	2,975.40	-0.32	-2.45
Hong Kong, China HSI	27,655.81	0.46	-1.89
India BSE Sensex	41,323.00	1.05	0.04
Indonesia JCI	5,928.79	0.71	-5.89
Korea, Rep. of KOSPI	2,210.34	0.07	0.58
Malaysia KLCI	1,534.16	-0.19	-3.44
Pakistan KSE 100	40,574.52	0.99	-1.99
Philippines PSEi	7,396.94	1.01	-5.35
Singapore STI	3,213.71	0.53	-0.28
Sri Lanka CSEALL	5,847.83	0.29	-4.59
Taipei, China TWSE	11,758.84	0.94	-1.99
Thailand SET	1,505.54	-0.54	-4.70
Viet Nam VNINDEX	928.76	0.09	-3.35



NIE = Newly Industrialized Economies



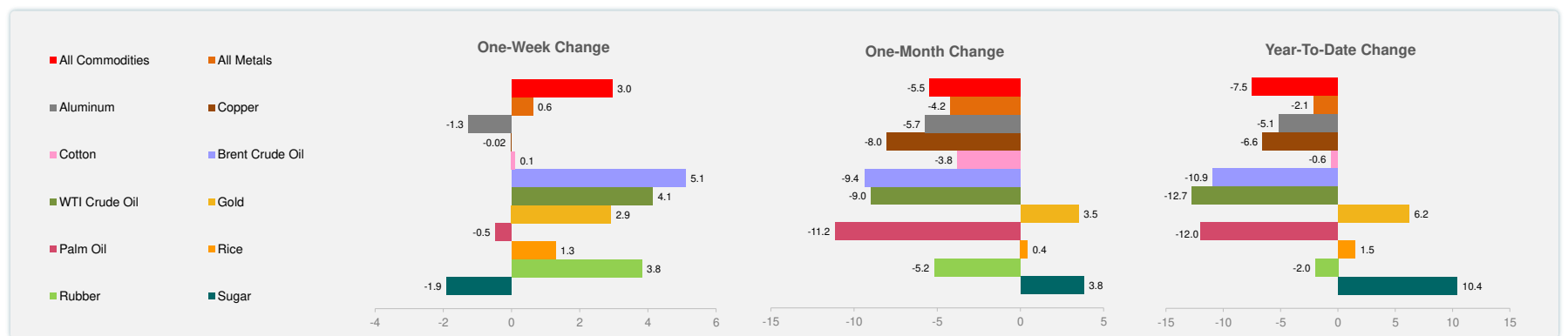
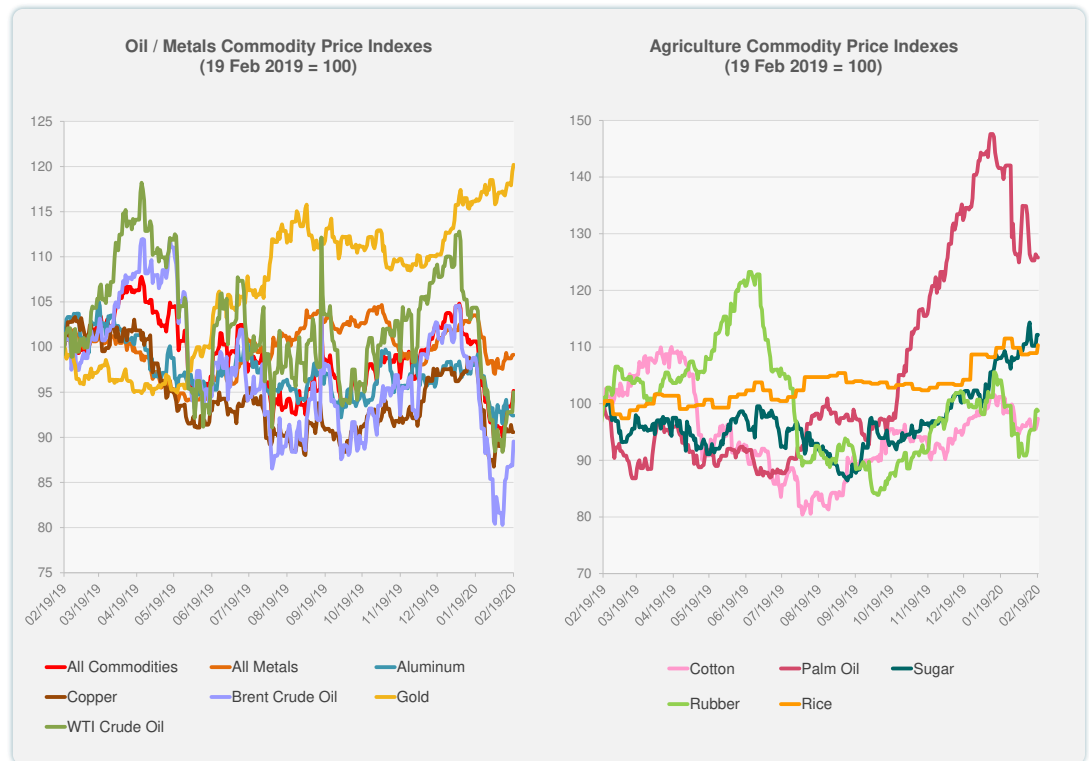
Source: Bloomberg.



Source: Bloomberg.

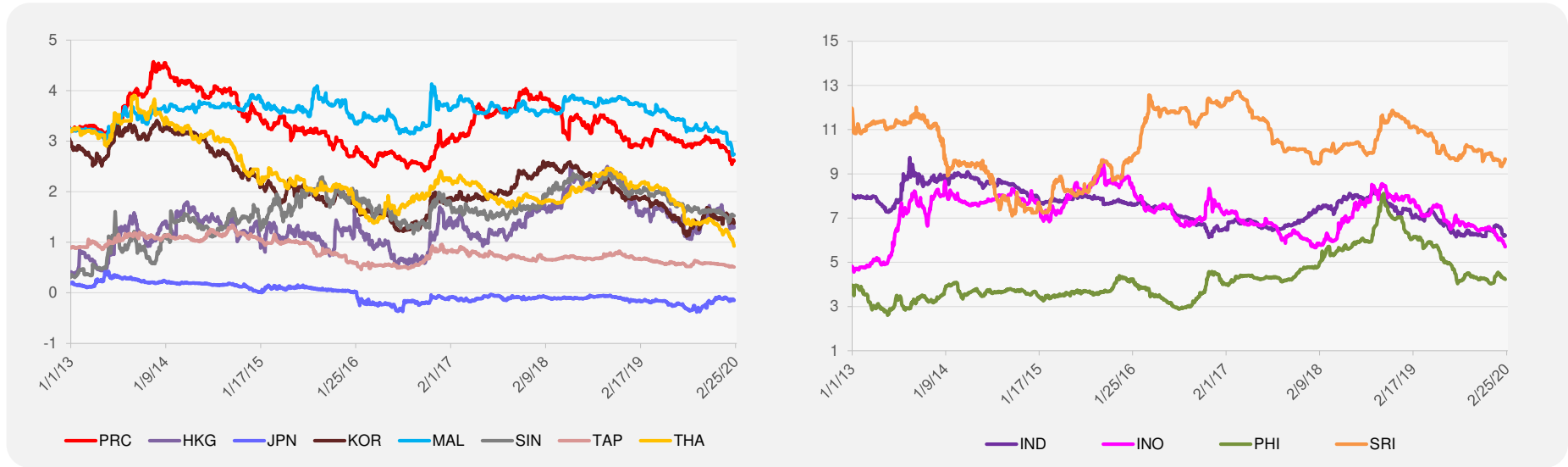
	Unit	Latest Closing	% change from Previous Day	% change from 01-Jan-20
S&P All Commodities	US\$	403.64	1.33	-7.47
S&P All Metals	US\$	212.91	0.04	-2.13
Aluminum	US\$/metric ton	1,690.25	-0.01	-5.11
Copper	US\$/metric ton	5,745.75	-0.01	-6.56
Cotton	US cents/lb	65.90	1.20	-0.60
Brent Crude Oil	US\$/barrel	59.07	3.09	-10.92
WTI Crude Oil	US\$/barrel	53.29	2.38	-12.73
Gold	US\$/troy oz	1,611.70	0.63	6.22
Palm Oil	US\$/metric tonne	651.00	-0.17	-11.97
Rice ¹	US\$/metric ton	470.00	1.29	1.51
Rubber ²	US\$/kg	163.00	-0.24	-1.98
Sugar	US cents/lb	14.95	0.00	10.41

¹ Latest closing price from 19 February 2020.
² Singapore Exchange, Ribbed Smoked Sheet Rubber.

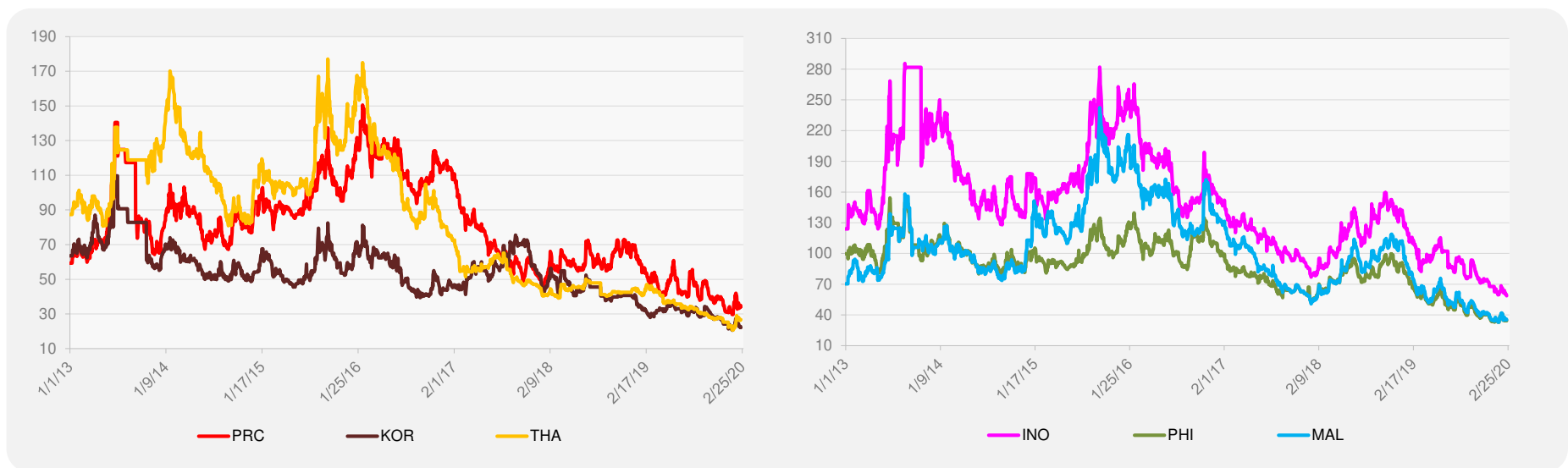


Source: Bloomberg.

5-YEAR LOCAL CURRENCY GOVERNMENT BOND YIELDS (%)



5-YEAR CREDIT DEFAULT SWAP¹



¹ In USD and based on sovereign bonds.
Source: Bloomberg.